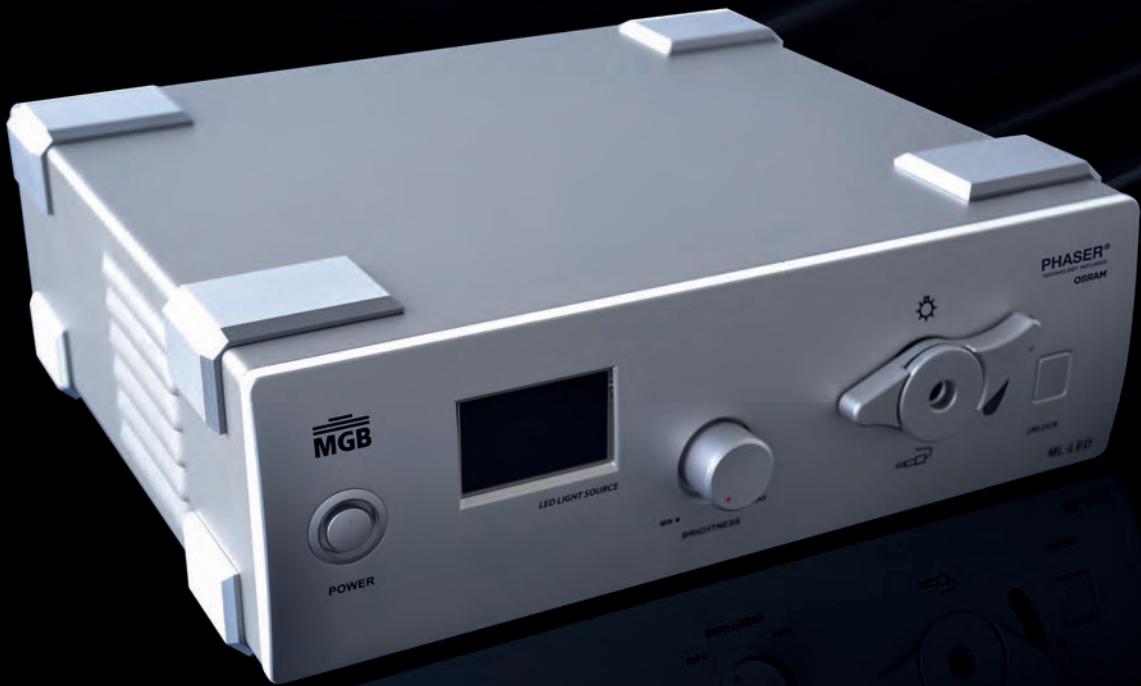




ELECTRONICS

LED LIGHT SOURCES



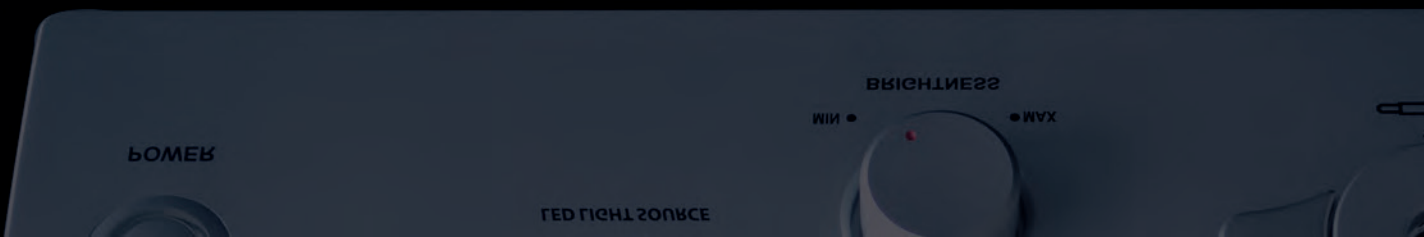
PERFECTION BY PRECISION



■ LED LIGHT SOURCE
ML-LED 685-00800

“To love beauty is to see light.”

Victor Hugo



Laser/LED-hybrid light module
Most advanced & most powerful semiconductor-based technology available
Real alternative to 300W-Xenon lamps
Long average lamp lifetime of more than 10,000 hours
Brilliant daylight quality
Universal light guide cable connector



ML-LED 685-00800

Lamp type	Laser/LED-hybrid	Dimensions (w x d x h)	380 x 340 x 120 mm
Lamp life time	≥ 10,000 hours	Weight	11,5 kg
Luminous flux	≥ 1.900 lm	Power supply	100-240 VAC, 50/60 Hz
Color temperature	6,500 K	Certified to	IEC 601-1, CE acc. to MDD
Light outlets	1 (universal)	Extend of delivery	- Power cord - Instructions for use
Light intensity adjustment	Continuous digital adjustment	Field of application	All



MS-LED 685-00600

Lamp type	LED	Dimensions (w x d x h)	380 x 340 x 120 mm
Lamp life time	≥ 10,000 hours	Weight	8,4 kg
Luminous flux	≥ 800 lm	Power supply	100-240 VAC, 50/60 Hz
Color temperature	6,500 K	Certified to	IEC 601-1, CE acc. to MDD
Light outlets	1 (MGB/Wolf)	Extend of delivery	- Power cord - Instructions for use
Light intensity adjustment	Continuous digital adjustment	Field of application	All except Laparoscopy





MGB Endoskopische Geräte GmbH Berlin
Schwarzschildstrasse 6
12489 Berlin

+49 30 / 63 92 7000
+49 30 / 63 92 7011
sales@mgb-berlin.de
www.mgb-berlin.de



 **DELRUS EUROPE**

Delrus Europe Kft.

Allee Corner Business Center
Corner Tower, 4th floor
Hungary, 1117 Budapest, Október 23. utca 8-10.
Tel.: +36 1 882-3579,
Fax: +36 1 882-3501
E-mail: delrus.e@delruseurope.com
Web: www.delruseurope.com